



Flat 6, Seamill Court Seamill Park Crescent

, Worthing, BN11 2PR

Guide price £220,000

Leasehold Council Tax Band A



James & James Estate Agents are delighted to bring to the market this beautifully presented, two bedroom purpose built ground floor flat situated in this popular residential location being close to the beach.

In brief the accommodation comprises outside storage cupboard, spacious entrance hall with two storage cupboards, lounge with room off the lounge suitable as a dining room or second bedroom, good size master bedroom, bath & shower room, separate W.C.

Other benefits include gas central heating and double glazing. In our opinion internal viewing is considered essential to appreciate of this apartment.

Situated in Seamill Park Crescent, the property is nice and close to the beach, regular buses serve the area, and local shops are nearby.

The property is also situated just a short walk to Brooklands Pleasure Park offering a variety of children's play areas and a new café.

Lease years remaining - 170
Service charge - £800 pa

Outside store

Double glazed front door

Entrance hall

12'4 narrowing to 3'4 x 13'5
(3.76m narrowing to 1.02m x 4.09m)





Two storage cupboards

Lounge
14'7 x 12'0 (4.45m x 3.66m)

Bedroom two (off the lounge)
8'4 x 11'11 (2.54m x 3.63m)

Modern fitted kitchen
10'8 x 7'2 (3.25m x 2.18m)

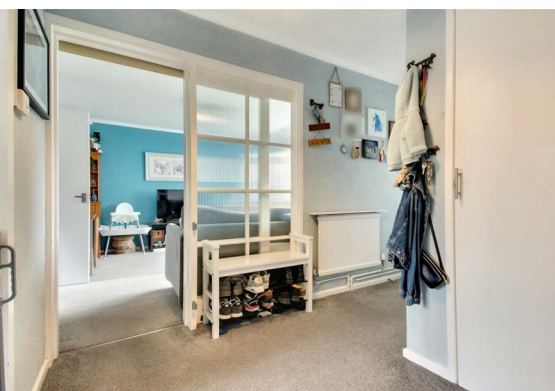
Master bedroom
10'4 x 13'3 (3.15m x 4.04m)

Bath & shower room

Separate W.C.

Communal gardens

On road parking



Floor Plan

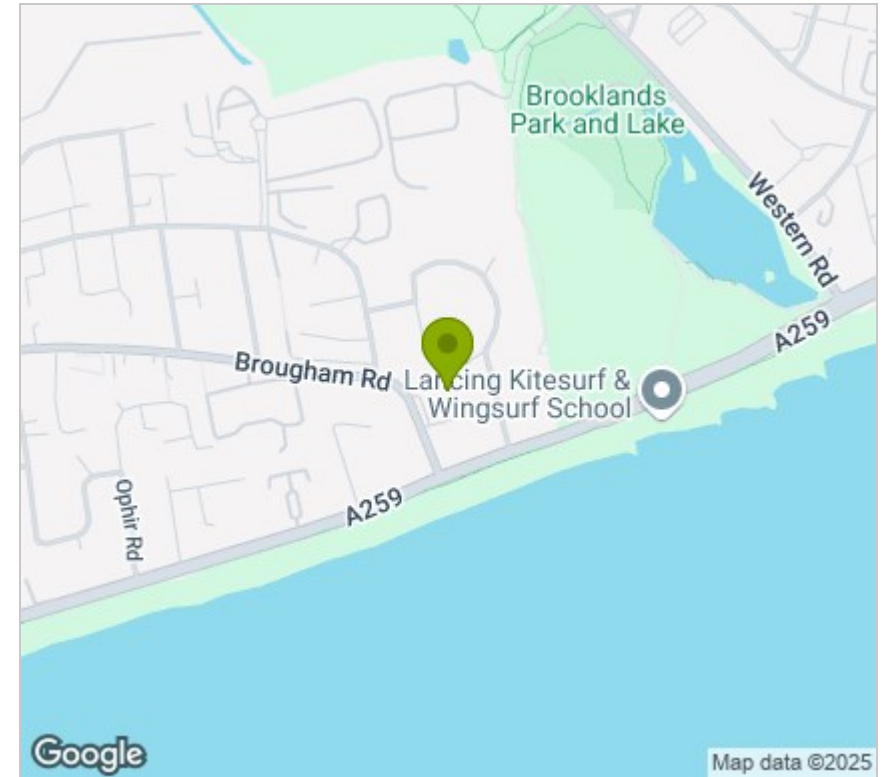


Viewing

Please contact our Worthing Office on 01903 958770 if you wish to arrange a viewing appointment for this property or require further information.

These particulars, whilst believed to be accurate are set out as a general outline only for guidance and do not constitute any part of an offer or contract. Intending purchasers should not rely on them as statements of representation of fact, but must satisfy themselves by inspection or otherwise as to their accuracy. No person in this firm's employment has the authority to make or give any representation or warranty in respect of the property.

Area Map



Energy Efficiency Graph

